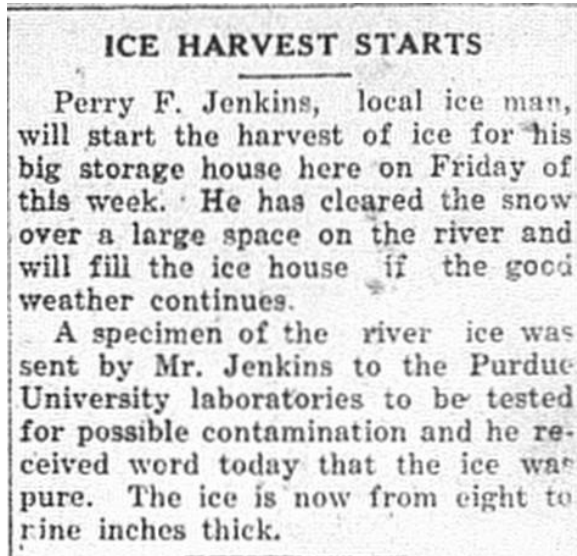


Stalking My Hometown  
1924-1947  
Ice Harvest Danger

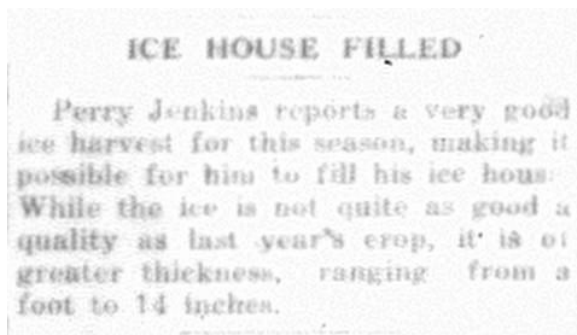
Ice Harvest was a strenuous, dangerous business, but evolved into something else.

It's in 1925 and the ice harvest begins.  
[Until the 1930s, ice was "harvested" from lakes each winter for use by businesses and homes. The ice was stored in very well-insulated "ice houses" with straw between the ice blocks cut from the lake.]



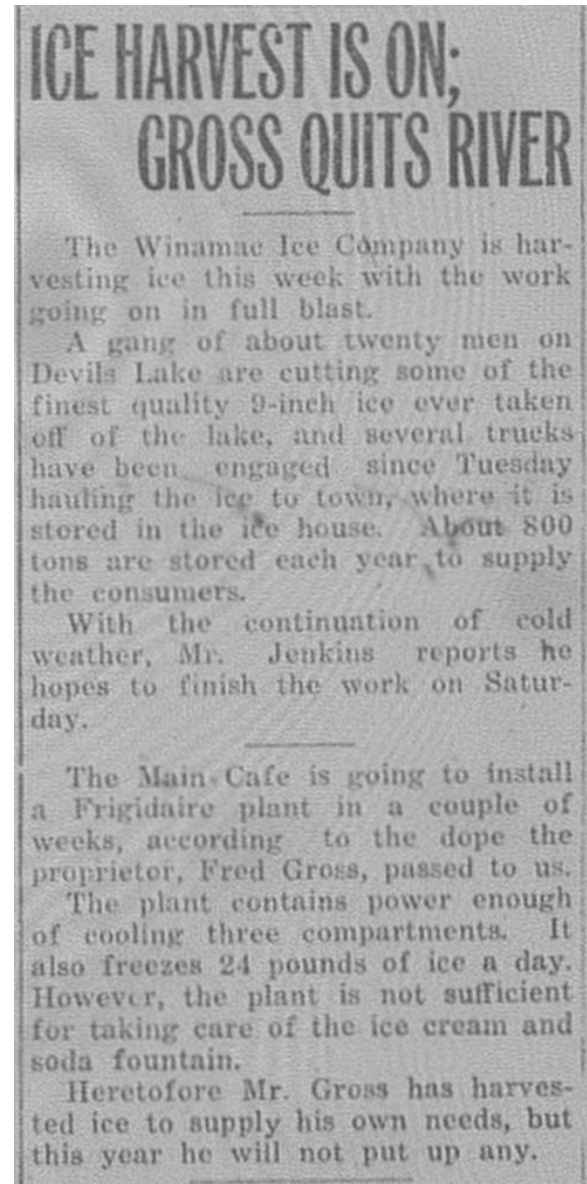
Winamac (IN) Republican 15 Jan 1925: 6. Microfilm.

After a month of cold, cold work, the ice house filled



Winamac (IN) Republican 12 Feb 1925: 1. Microfilm.

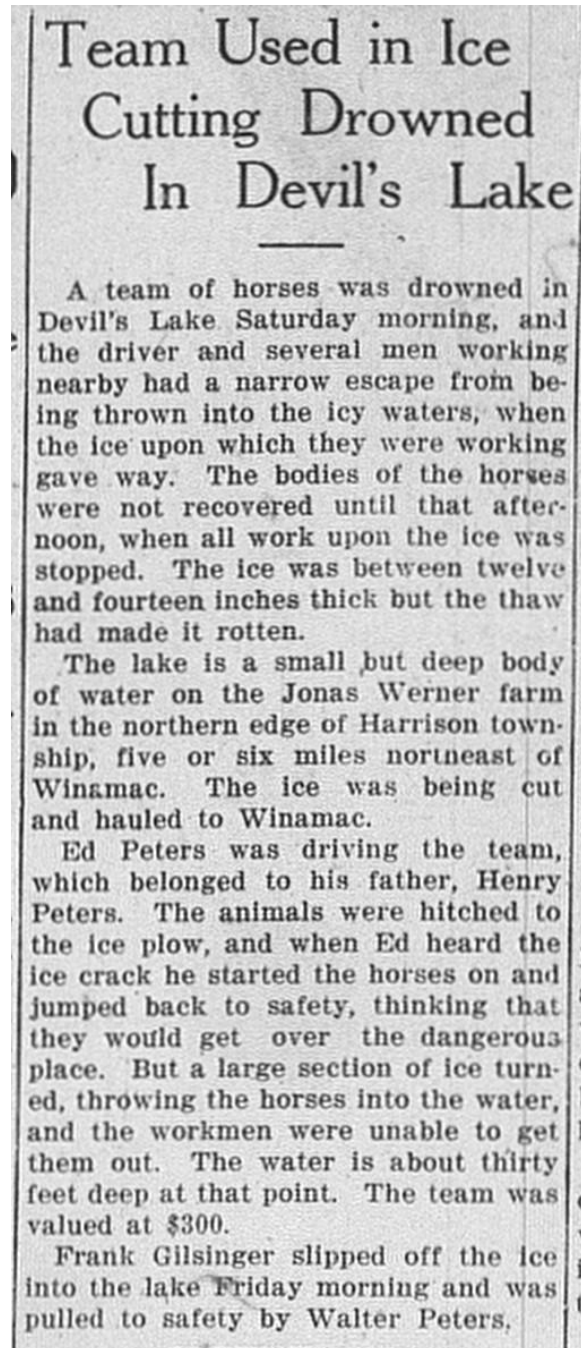
For 1927, the ice harvest is on, but future doesn't look good.



Winamac (IN) Republican 27 Jan 1927: 1. Microfilm.

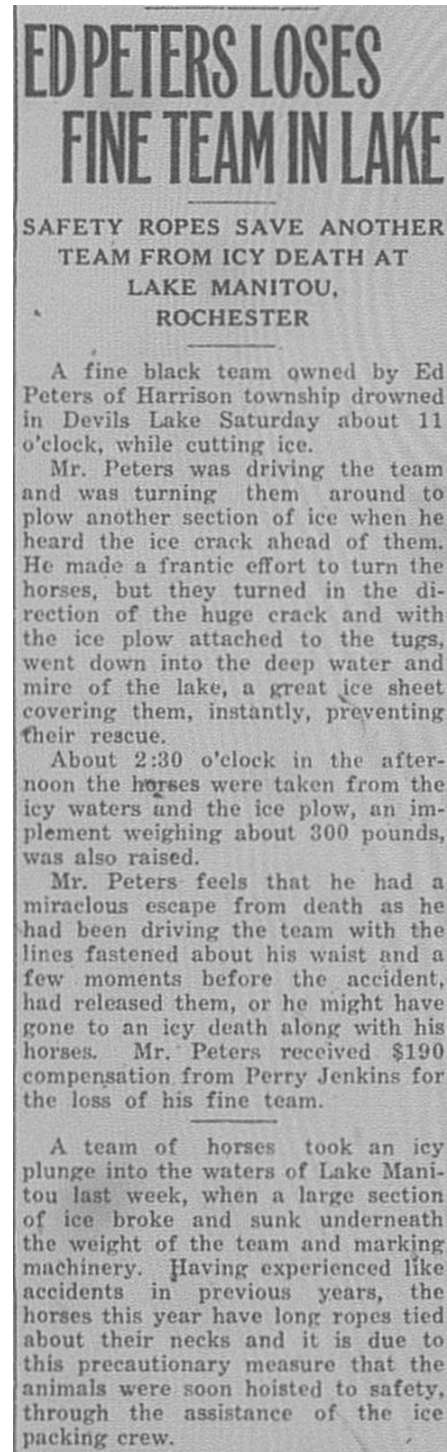
Stalking My Hometown  
1924-1947  
Ice Harvest Danger

It's Death for ice harvest team (from *The Democrat*).



Pulaski County (IN) Democrat 3 Feb 1927: 1. Microfilm.

It's Death for ice harvest team (from *The Republican*).



Winamac (IN) Republican 3 Feb 1927: 1. Microfilm.

Stalking My Hometown  
1924-1947  
Ice Harvest Danger

Cork insulation saves ice.

[While a few businesses, e.g., some cafés, could afford mechanical refrigeration, it was an “ice box”, insulated with cork to reduce ice melting, at home.]



**Alaska**  
Saves  
**ICE**

We never have to sell Alaskas. Everybody knows cork insulation is the best insulation known in refrigerators. They know it keeps in the cold, out the heat and down the ice bills. Buy an Alaska now and start saving.

This Alaska holds 75 lbs. of ice and ices from the front.

In Golden Oak **\$29.00**  
Side Icer . . . . **\$36.25**

**Fry & Lange**  
Home Furnishers and Funeral Directors

Winamac (IN) Republican 30 May 1929: 3. Microfilm.

By the mid-1930s, ice cubes were available at home!

[But it's not as simple as it is presented. (see below)].

SEE THE **Frigidaire '35**  
WITH THE **FAMOUS SUPER FREEZER**

NOW ON DISPLAY AT OUR FRIGIDAIRE SPRING PARADE

We extend a cordial invitation to you and your friends to attend the Frigidaire Spring Parade and see the beautiful new Frigidaires. Each of the 16 snow-white models has the new Super Freezer, affording greater convenience and economy and setting new standards for efficient household refrigeration.

The Super Freezer makes possible a Complete Refrigeration Service. It provides the right kinds of cold for every purpose—all in the same cabinet. There's *fast freezing* for making ice cubes and desserts; *frozen storage* for meats and ice cream; *extra cold storage* for keeping a reserve supply of ice cubes; *moist storage* for vegetables and fruits; and *normal storage* below 50° for foods requiring dry, frosty cold.

Besides the Super Freezer, the new Frigidaire '35 has the Cold Control, automatic reset defrosting switch that turns the current on when defrosting is completed, automatic ice tray release, and the interior of each is finished in porcelain-on-steel.

Come into our showroom at your first opportunity. See the Frigidaire Spring Parade! Then learn how easily you can have a Frigidaire of your own.




Standard Series Frigidaire '35    Super Series Frigidaire '35    Master Series Frigidaire '35

LISTEN TO JACK PEARL in a new show with Freddy Rieff's orchestra, every Wednesday, 9 p. m., over C. B. S. network.

**John H. Kelly Hardware**  
WINAMAC, INDIANA

Winamac (IN) Republican 25 Apr 1935: 3. Microfilm.

Stalking My Hometown  
1924-1947  
Ice Harvest Danger

Ice cubes was without “fuss or muss”.  
[Unlike the automatic ice dispensers today, trays had to be filled with water, the levered form (seen at left) was inserted in the tray, and the assembly inserted into the freezer compartment. After freezing, the tray was removed, the lever was lifted, breaking the ice into cubes. At least that was the theory. In practice, the lever was a challenge to lift and the cubes usually fractured into slivers. It was rare to get a “complete cube”, unless one washed warm water over the tray (and melting the ice) before attempting to life the lever.]

**Instant Cube Release Feature of New Refrigerator**



Gone are the days when tugging, chopping, twisting gymnastics are necessary to obtain ice cubes from an automatic refrigerator. Shown above is the sensationally new and efficient instant cube release featured exclusively in the 1937 Frigidaire. Developed in the research laboratories of the Frigidaire division of General Motors, the new type ice tray makes available instantly and with no effort on the part of the user from two to a dozen or more cubes, doing away with the necessity for holding trays under the water faucet and losing up to twenty percent of the ice content in meltage. One grasps the tray firmly with one hand, lifts the lever with a finger of the other and there are the cubes ready for use without fuss or muss.

The New 1937 Frigidaires Are for Sale by  
**John H. Kelly Hardware**

Winamac (IN) Republican 15 Apr 1937: 4. Microfilm.